

LED Grid Downlight Installation Instruction

Description

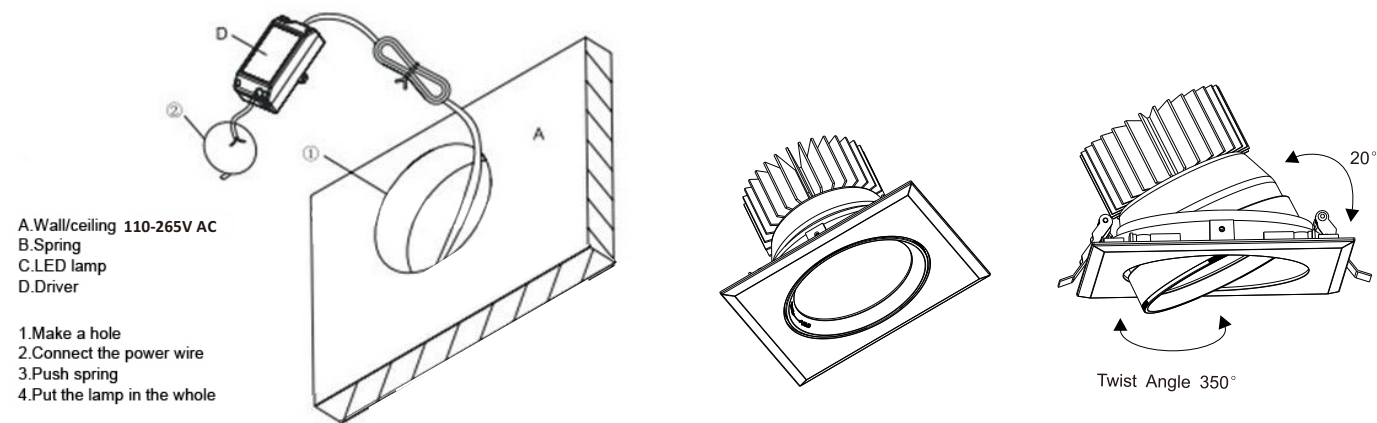
The LED Grid Downlight is an energy-efficient LED recessed ceiling fixture that is perfectly suited for mounting in system/hollow ceilings. The fixture provides a pleasant light array with a beam angle of 24°/45°. The fixture comes completely with standard driver(included). It is mounted by using spring clamps connection.

Package contents

- 1 x Downlight 30W
- 1 x Driver with open cable end
- 1 x Manual

Safety Instruction

- Unplug mains before installing or wiring the fixture.
- Never look directly into the light source.
- User must be follow the safety instruction and warning clauses written in this manual.

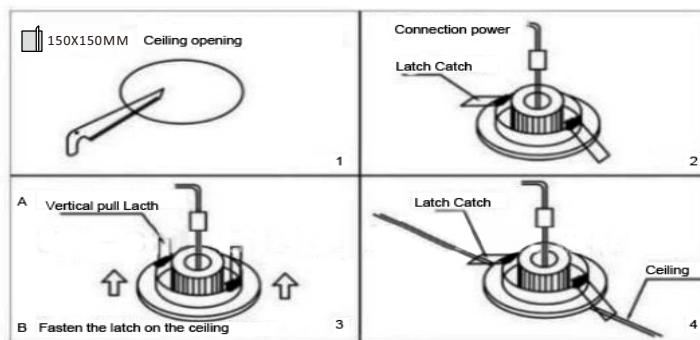
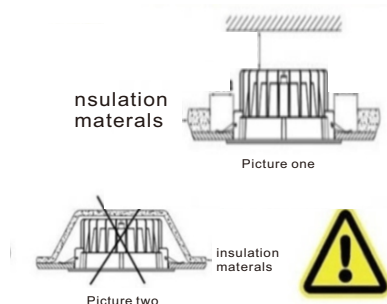


Warning

Electrical products can cause death or injury, or damage to property. This product should be installed by a qualified licensed electrician.

- Ensure mains supply is switched off before commencing work
- Before cutting, ensure that the hole does not impinge on joists, pipe work, cables or other building services

As shown in above figure, the luminaire mounted in the mounting hole, and ensure strong

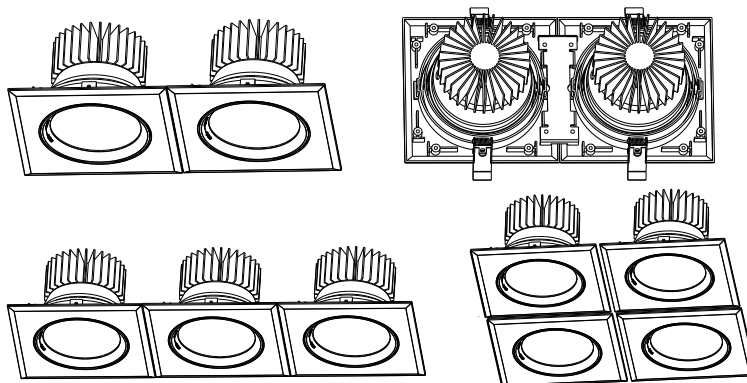


1. Please turn off the power when installing.

2. Do not touch or grasp the downlight when it is hot.

3. Working environment temperature: -20~45°C

4. Only for indoor application.



MUST BE INSTALLED BY LICENSED ELECTRICIAN